

Indiana's Tobacco Burden

317.234.1787
www.itpc.in.gov
www.WhiteLies.tv
www.voice.tv



Tobacco use is the single most preventable cause of death and disease in the United States. Annually cigarette smoking causes more deaths than alcohol, AIDS, car accidents, illegal drugs, murders and suicides, combined. The impact of tobacco on Indiana is staggering, costing Hoosiers 9,700 lives each year. Data shown here are smoking rates for Indiana and some comparisons with the U.S. This data illustrates the great burden smoking places on all Hoosiers.

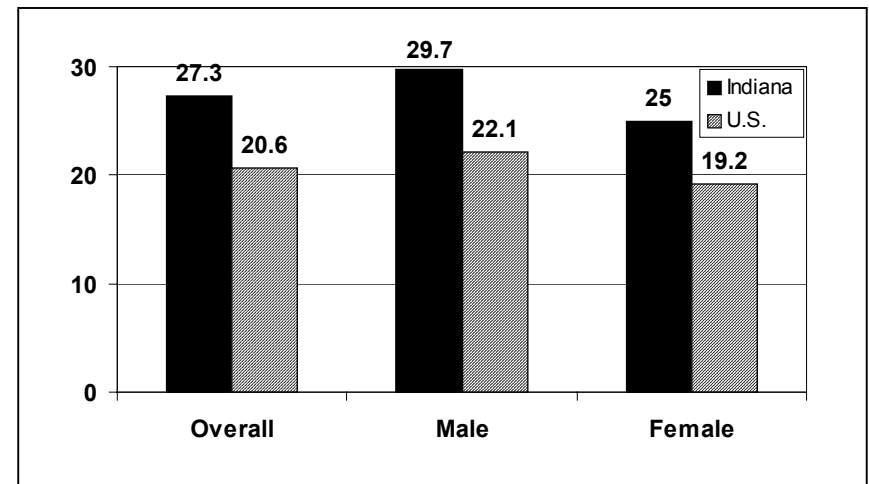
Indiana Adult Smoking Rates

- Indiana's adult cigarette smoking rate of 27.3% indicates a non-statistically significant increase from 2004.
- Nearly 1.7 million adults in Indiana smoke cigarettes, or 27% of the State's adult population.
- Indiana ranks 2nd among all states in adult smoking prevalence and is consistently in the list of states with the highest smoking rates, and is higher than the U. S. rate of 20%.
- Indiana smoking rates for men remain higher than those for Indiana women. Hoosier smoking rates by gender are higher than the national rates.

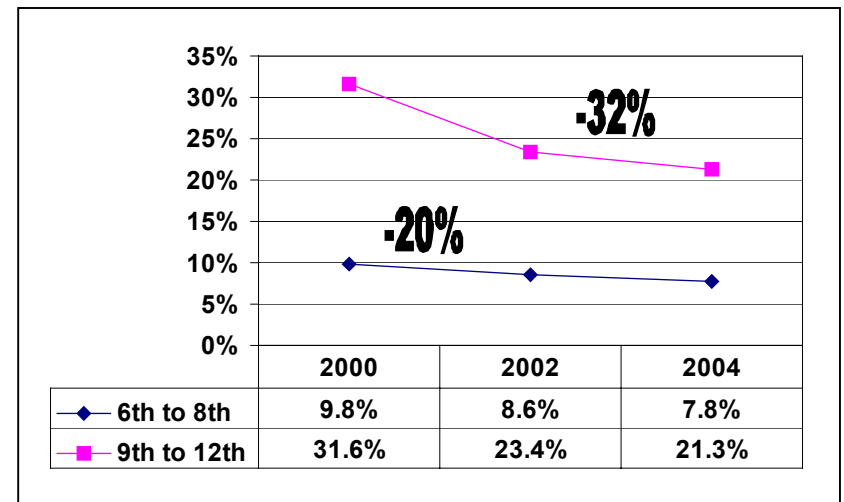
Indiana Youth Smoking Rates

- **High School Smoking** – 21%. A 32% decline from 31.6% in 2000 to 21.3% in 2004. **Middle School Smoking** – 8%. A 20% decline from 9.8% in 2000 to 7.8% in 2004. These decreases in youth smoking bring Indiana below the national averages.
- Smoking rates among race/ethnic groups at the middle school level are similar for Whites (8.1%), African Americans (6.2%) and Latinos (8.1%). However, the rate for White (22.3%) high school students is higher than rates for African American (12.6%) and Latino (22.7%) students.

Adult Smoking Rates, Indiana vs. U.S., 2005



Indiana Youth Smoking Rates, 2000-2004



Indiana's Tobacco Burden

317.234.1787
www.itpc.in.gov
www.WhiteLies.tv
www.voice.tv



Smoking by Pregnant Women in Indiana

- Indiana's smoking rate among pregnant women has declined to 18.5% from 21% in 1999. However this is still one of the highest smoking rates in the country.
- County rates range from 35.5% to 5.4%. Sixty-four (64) of Indiana's 92 counties have a smoking during pregnancy rate higher than the Indiana average. All but three Indiana counties have a smoking during pregnancy rate higher than the United States average.
- Smoking during pregnancy is associated with poor health outcomes, such as low birth weight, growth retardation, and spontaneous abortions. Prenatal exposure to secondhand smoke is also harmful to children affecting mental development.

Indiana's Tobacco Policies

- Cigarette excise tax: 55.5 cents
- The average state tobacco tax is 95.3 cents, with taxes ranging from \$2.46 to 7 cents.
- Limited statewide restrictions on smoking in worksites and public places – Seven out of ten adult indoor workers report a smoke-free worksite policy in Indiana.
- As of July 2006, approximately one third of all Hoosiers are protected from secondhand smoke by a local smoke free air law in 23 communities.

What Tobacco Costs Indiana

- Medical costs related to smoking in Indiana: \$1.9 billion annually
- Medicaid expenditures directly related to tobacco: \$448 million
- For every pack of cigarettes sold in Indiana, Hoosiers spend \$7.10 in health care costs related to smoking.

Smoking rates of Hoosiers illustrate why tobacco use greatly impacts our State. Through Indiana's comprehensive tobacco control program we continue to raise Hoosiers' awareness of tobacco prevention and control issues. These tobacco control efforts are beginning to be realized through reductions in youth smoking, but it will take some time before we will see declines in Indiana high adult and pregnant women smoking rates. Join the fight so all Hoosiers can live without tobacco!

July 10, 2006